

DEDICATION

KNOW ALL PERSONS BY PRESENTS THAT: Country Club, LLC, a Wyoming Limited Liability Company, owner in fee simple of a tract of land situated in a portion of the East Half (E½) of Section 2, Township 15 North, Range 73 West of the 6th P.M., City of Laramie, Albany County, Wyoming, more particularly described as follows: Beginning of a point on the east line of said Section 2 from which the east quarter corner of said Section 2 bears N.00°13'45"E, (bears of bearing) a distance of 918.07 feet said point also being the southeast corner of Grand View Heights Second Filing, thence westerly along the south line of said Grand View Heights 2nd Filing the following 8 courses: N.88°53'01"W, a distance of 225.34 feet; thence N.00°02'59"E, a distance of 5.12 feet; thence N.88°45'15"W, a distance of 236.74 feet; thence N.88°02'36"W, a distance of 345.64 feet; thence S.04°57'24"W, a distance of 5.00 feet; thence N.89°02'36"W, a distance of 225.15 feet; thence N.89°57'18"W, a distance of 225.25 feet; thence N.88°53'01"W, a distance of 143.81 feet; thence S.03°31'13"W, a distance of 220.84 feet along a curve concave to the northwest, having a radius of 1970.00 feet and a central angle of 229°15'12" (about bearing of S.03°31'13"W, about distance of 143.81 feet); thence S.03°31'13"W, a distance of 64.60 feet; thence S.88°32'32"E, a distance of 190.01 feet; thence S.89°57'18"E, a distance of 214.75 feet; thence N.89°18'58"E, a distance of 60.85 feet; thence S.89°57'18"E, a distance of 218.83 feet; thence S.89°57'18"E, a distance of 60.82 feet; thence S.89°57'18"E, a distance of 453.15 feet; thence S.89°53'01"E, a distance of 204.74 feet; thence S.00°09'59"E, a distance of 12.88 feet; thence S.89°53'01"E, a distance of 184.75 feet to the east line of said Section 2; thence N.00°13'45"E, along said east line, a distance of 306.00 feet to the point of beginning. Containing 3.7214 acres more or less.

Has caused the same to be surveyed, plotted and known as GRAND VIEW HEIGHTS 3RD FILING, do hereby declare the subdivision of said land as it appears on this plat to be their free act and deed and in accordance with their duties, and do hereby dedicate to the use of the public the streets and grant the easements for the purposes indicated herein.

Country Club, LLC, a Wyoming Limited Liability Company

ACKNOWLEDGMENT

STATE OF WYOMING } SS
 COUNTY OF LARAMIE }
 This dedication instrument was acknowledged before me this _____ day of _____, 2009, by William J. Edwards, Managing Member of Country Club, LLC, a Wyoming Limited Liability Company.
 I know my hand and official seal.
 Notary Public, Laramie County, Wyoming
 My Commission Expires: _____

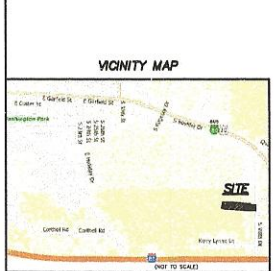
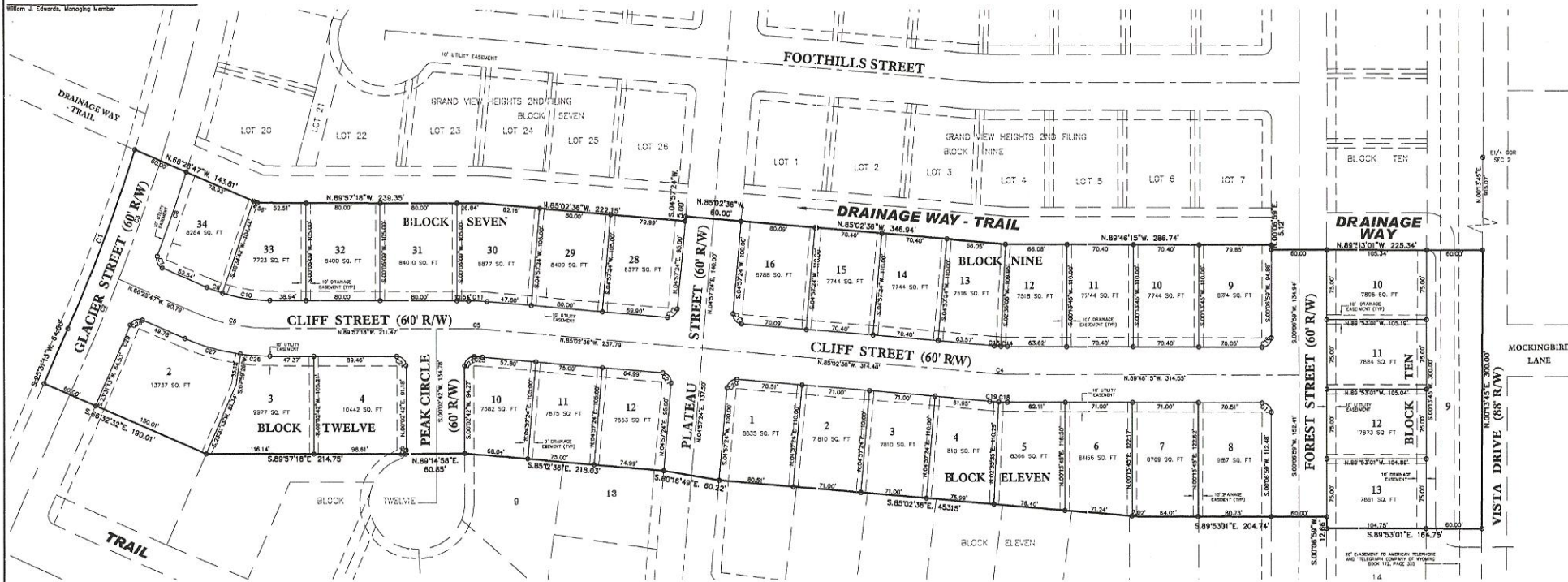
APPROVALS

Laramie Planning Commission
 Chairman _____ Date _____
 City of Laramie
 Mayor _____ Date _____
 Attest: _____
 City Clerk _____ Date _____



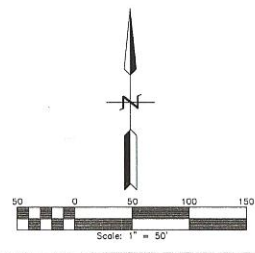
CERTIFICATE OF SURVEYOR

I, John A. Steele, Registered Professional Land Surveyor in the State of Wyoming, hereby state that this plat of GRAND VIEW HEIGHTS 3RD FILING was prepared from official plats and deeds of record and from notes of a field survey conducted by me or under my direct supervision during the month of June, 2009, that the monuments are set or found as shown and that this plat correctly represents said survey of the land depicted herein to the best of my knowledge.



LOT CURVE TABLE

Lot	Area (Ac)	Area (Sq Ft)	Perimeter (Feet)
1	0.01	1000	1000
2	0.01	1000	1000
3	0.01	1000	1000
4	0.01	1000	1000
5	0.01	1000	1000
6	0.01	1000	1000
7	0.01	1000	1000
8	0.01	1000	1000
9	0.01	1000	1000
10	0.01	1000	1000
11	0.01	1000	1000
12	0.01	1000	1000
13	0.01	1000	1000
14	0.01	1000	1000
15	0.01	1000	1000
16	0.01	1000	1000
17	0.01	1000	1000
18	0.01	1000	1000
19	0.01	1000	1000
20	0.01	1000	1000
21	0.01	1000	1000
22	0.01	1000	1000
23	0.01	1000	1000
24	0.01	1000	1000
25	0.01	1000	1000
26	0.01	1000	1000



LEGEND

- SET 3/4" X 2 1/2" LONG REBAR WITH 1 1/2" ALUMINUM CAP STAMPED "S.E.S.L.S. 2009" (AT ALL LOT CORNERS)
- FOUND 1/2" BRASS CAP

NOTES

- 1) BASIS OF BEARING - CITY OF LARAMIE DATUM COMBINATION FACTOR = 0.9995014
- 2) A PORTION OF LOTS BLOCK TEN (63.53 AC) AND ALL OF LOT 16, BLOCK TWO (2.64 AC) HEREBY OFFERED TO THE CITY OF LARAMIE AS PARKS AND OPEN SPACE BY OR DEED OF EVENT DATE.

GRAND VIEW HEIGHTS 3RD FILING

SITUATED IN A PORTION OF THE E½ SECTION 2, T.15N., R.73W., OF THE 6TH P.M., CITY OF LARAMIE, ALBANY COUNTY, WYOMING LOTS 28-34, BLOCK 7; LOTS 9-16, BLOCK 8; LOTS 1-8, BLOCK 11; LOTS 2-4, 10-12, BLOCK 12

PREPARED JUNE, 2009

STEELE SURVEYING SERVICES, LLC
 PROFESSIONAL LAND SURVEYORS
 1102 WEST 19TH STREET, P.O. BOX 8070
 PHOENIX, AZ 85016-4828